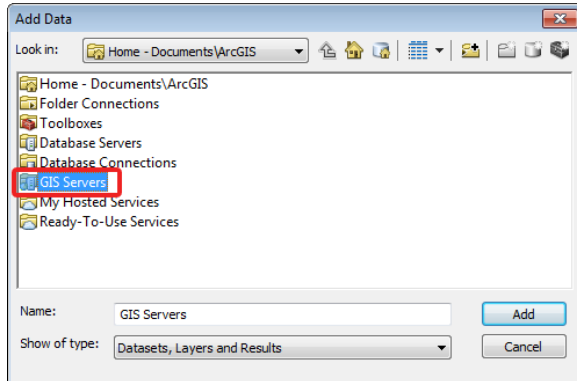


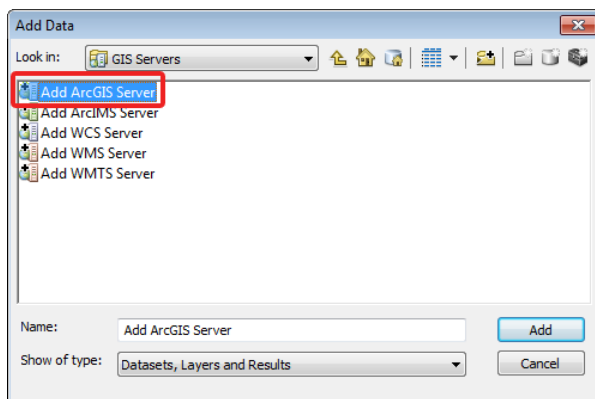
How to add Kentucky's ArcGIS Server Image Services to ArcMap

Adding Image services to ArcMap:

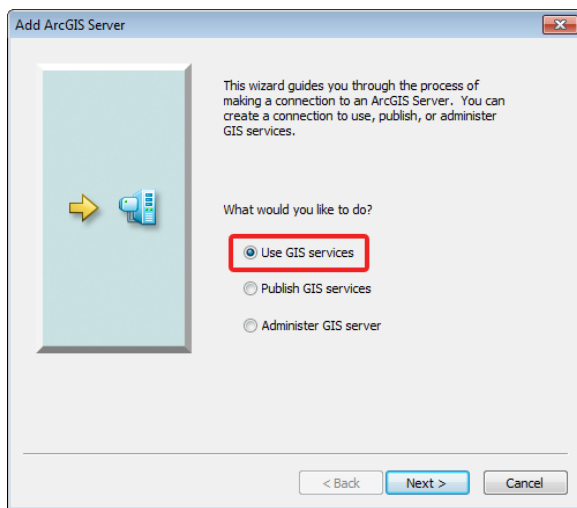
In ArcMap, click the Add data button. In the Add data dialog box, click on the drop down arrow at the top. Choose "GIS Servers" from the pulldown (see below):



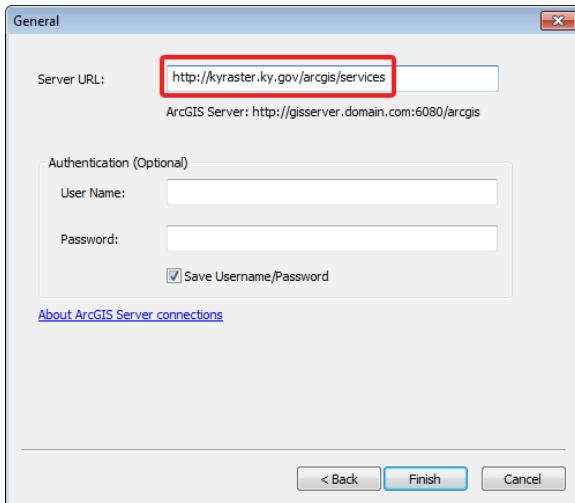
Then, double-click "Add ArcGIS Server" as (see below).



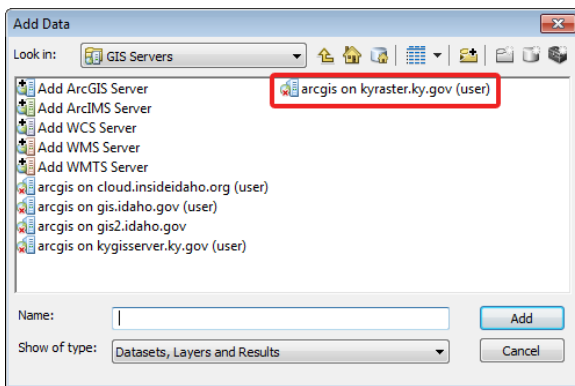
In the Add ArcGIS Server dialog box, make sure "Use GIS Services" is selected and choose Next (see below).



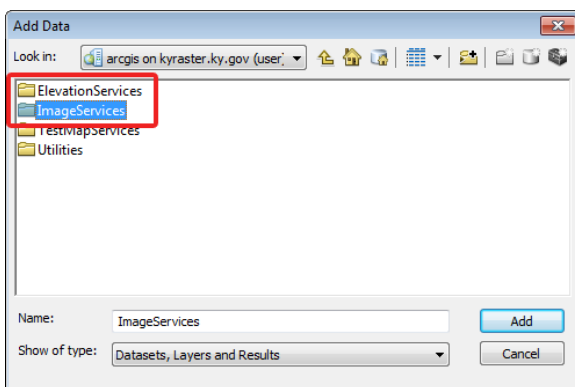
For the Server URL, type or paste in <http://kyraster.ky.gov/arcgis/services> and click Finish (see below).



Be patient while the connection to the server is made. It may take a little time for it to read the services on the server. When the connection has been made, a link that says "arcgis on kyraster.ky.gov (user)" will then be displayed in the dialog (see below).



To proceed, double-click on the link and you will see a set of folders. The folders of interest are ElevationServices and ImageServices. Explore the different services that are available.



NOTE: Unlike our map services most all of the image and elevation services are provided in a Kentucky Single Zone projection. Additionally, a subset of the services is also provided in Web Mercator and are designated with a "_WGS84WM" suffix. Items with a "_IR" suffix are setup to display as false color infrared.